



John Thomas "Tommy" Whaley

March 28, 1940 - May 4, 2025

It is with deep sorrow that we announce the passing of John Thomas (Tommy) Whaley, who went to be with the Lord on May 4, 2025 at the age of 85.

Tommy was a devoted Christian, a loving husband, father, granddaddy, and great-great. His unwavering faith in Jesus Christ, his dedication to his family, and his commitment to his community defined the life he lived.

Born on March 28, 1940 in Roanoke, Alabama, Tommy proudly served his country in the U.S. Army, where he learned the true meaning of discipline, service, and sacrifice. His commitment to protecting others continued throughout his career as a Spalding County Sheriff's Deputy for 37 years, where he stood as a protector of his community with the same courage, integrity, and honor that guided every part of his life.

Family was everything to Tommy. He cherished his late wife, Betty, with whom he shared 60 beautiful years of marriage. Together, they built a life full of love, laughter, and cherished memories. As a father, he was a strong, guiding presence for his children, Angela and Tommy Jr., always leading them with wisdom, care, and love.

As a granddaddy and great-great, Tommy showered his grandchildren and great-grandchildren with affection, and his deep love for them was evident in the countless moments spent together—whether sharing stories, offering advice, or simply spending time in the warmth of their company. He was their protector, their guide, and their rock.

His family knew him as a man who would go to great lengths to keep them

safe and secure. He was a constant source of support, always putting his loved ones first, ready to offer a helping hand, a comforting word, or a shoulder to lean on. His devotion to his family was unmatched, and they were his pride and joy.

Tommy's faith in Jesus Christ was the foundation of his life. His kindness, grace, and compassion reflected his Christian values. He was a faithful member of Rock Springs Church, where he found peace and strength in his faith. His belief in the love of God was evident in his actions, and he imparted these lessons of love and faith to his children, grandchildren, and great-grandchildren.

In addition to his devotion to family and faith, Tommy had a great love for Alabama football. His passion for the Crimson Tide was something that united his family and sparked joy in his life. Many happy memories were made on game days where his excitement and team spirit were contagious.

Tommy is survived by his loving children Angela Page (Ken), Tommy Whaley Jr. (Gina), his grandchildren Kendall Criswell (Austin), Kelly Lawrence (Richard), Rudy Whaley, Katherine Whaley, his great-grandchildren Emma Criswell, Ella Criswell, Eliza Criswell, and his sister, Janice Kingren. He was preceded in death by his loving wife Betty Whaley, mother Hilda Whaley, father Fred Whaley, and brother Rodney Whaley.

The family would like to express its gratitude to Joanne Cornell, Quitta Thomas, and Southern Grace Hospice Care for taking such wonderful care of Tommy during these last few years of his life.

Tommy leaves behind a legacy of love, faith, and strength. He was a man who knew the importance of family, who loved fiercely, and who protected his loved ones with his whole heart. He will be deeply missed by his children, grandchildren, great-grandchildren, and all who were fortunate enough to know him.

Tommy's life will be celebrated on Saturday, May 10, 2025, at 11 AM at Haisten McCullough Funeral Home, 1155 Everee Inn Road, Griffin, Ga 30224. Burial will follow in Westwood Gardens. The family will receive friends on

Saturday from 10 AM until the service hour at the funeral home.

Cemetery Details

Westwood Gardens and Mausoleum

1155 Everee Inn Road
Griffin, GA 30224
(770) 229-4998

Previous Events

Visitation

MAY 10. 10:00 AM - 11:00 AM (ET)

Haisten McCullough Funeral Home
1155 Everee Inn Road
Griffin, GA 30224
(770) 229-4994
<https://www.haistenmcculloughfunerals.com>

Service

MAY 10. 11:00 AM (ET)

Haisten McCullough Funeral Home
1155 Everee Inn Road
Griffin, GA 30224
(770) 229-4994
<https://www.haistenmcculloughfunerals.com>

Tribute Wall

LW

“ Love, Sonya Wilson purchased the Simply Elegant Spathiphyllum for the family of John Thomas "Tommy" Whaley.



Love, Sonya Wilson - May 09, 2025 at 08:52 AM

KB

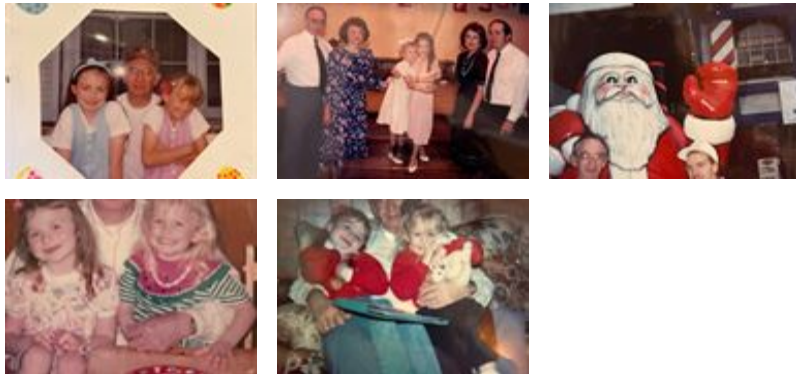
“ Kathy Brake lit a candle in memory of John Thomas "Tommy" Whaley



Kathy Brake - May 08, 2025 at 03:10 PM



“ 159 files added to the album LifeTributes



Haisten McCullough Funeral Home - May 08, 2025 at 10:20 AM

DF

“ Don, Lisa, and Family purchased the Simply Elegant Spathiphyllum for the family of John Thomas "Tommy" Whaley.



Don, Lisa, and Family - May 07, 2025 at 10:20 PM



“ Country Basket Blooms was purchased for the family of John Thomas "Tommy" Whaley.



May 07, 2025 at 03:08 PM



“ Blue Caribbean Bouquet was purchased for the family of John Thomas "Tommy" Whaley.



May 06, 2025 at 08:00 PM



“ A [Memorial Tree](/store/Product.aspx?ProductId=4518) was planted in honor of John Thomas "Tommy" Whaley.

May 06, 2025 at 08:00 PM



“ *Judy Suyton lit a candle in memory of John Thomas "Tommy" Whaley*



Judy Suyton - May 06, 2025 at 02:24 PM